

## President's Report:

April has now been and gone and was generously punctuated with public holidays. Even the weather gods were on good form for most of the month, so best use of the long weekends was a positive option. And more good news, covid is almost being treated like regular flu, so normal life can nearly be resumed.

Our April club run took us to Kaikoura with a repeat visit to Harmon's Classic car museum, including Bernie's Diner. This time we were treated to the additional benefit of an invitation to visit the private collection of Geoff Harmon, where Geoff & Bernie gave us an insight into some of the special vehicles on display. This was a magnificent collection further enhanced with murals of early Kaikoura and historic USA icons. This unique combination made for very interesting viewing of a very special collection.



Following the private collection viewing those members still looking around were invited to Bernie's workshop where he had several other vehicles in restoration, including one in the paint bay, look forward to seeing this one completed.



Look forward to seeing you all for the May run.

*Keep ya motor running and have a pirfic day.*

*Presidents thought for the month - following a horrific weekend road toll ...  
"drive for the conditions, and stop blaming the roads" !!*

Bill Stanley - President



## Welcome to New members:

*Jonathan & Joanne Doak*

*with their 1996 Cadillac Deville Concourse*

# Club Captain's report May 2022

## *Kaikoura Bernie's Diner and Car shed April event:*

*Some of us cruised up to Kaikoura on the Friday and stayed the weekend and others went up and back on the Saturday,*

*The weather was good to us, as Kaikoura put on the sun and heat while we were there.*



*We started at Bernie's Diner for our mid-day meal, then it was downstairs to check out the car museum. They have a good selection of all sorts of cars there.*

*Then it was to Geoff Harmon's private collection, which was on the hill a few kilometers away from the diner. This was an example of a well-kept shed with beautiful murals on the wall and well groomed, pristine motor cars. Most of which are American. While at Geoff's collection, Bernie invited us to his workshop up the hill. This is where they restore their vehicles. He had quite a few on the go and here are a few.*

*We had 38 members, 14 x American and 4 other cars that traveled up for the weekend.*

*Keep on cruising and don't forget to watch out for the other guy*

*Club Captain - Ray Bewley*





# MAY EVENT

## Waikuku Wanderlust – Sunday 22<sup>nd</sup> May

### Points Rally

**Organised and constructed by Peter Craig**

We've got a full day planned for Sunday 22<sup>nd</sup> May and I (Peter Craig) have organised a full day, kicked off with a Points Rally. Some of you may or may not have been exposed to this level of silliness in the past but irrespective these Rallies are great fun and can test relationships of the participants to breaking point – so keep a cool head, an open eye and think outside the square once you get started – it's not a race, quite the opposite!



We'll meet just off the Pegasus round- a- bout on the main North Highway just outside of Woodend. Take the 1<sup>st</sup> exit (left) at the round- a- bout then the first left into Garlic St opposite BP – you can go the length of the road and turn around in the bay at the end, that'll leave us all lined up facing North. The official meet time is **9:45am to be ready for the off by 10am.**

If you get there a little earlier than 9:45am there is BP for fuel or Maccas for breakfast but please keep to the departure timetable as we have a big day. At the conclusion of the rally, we will gather for lunch and prize giving – but wait there's more .... After lunch we are going to a mystery destination where there will be something for both the ladies and the gents.

There is a cost of \$10 per head for lunch, numbers will be required for catering purposes, so please contact Jimmi by return email or text 021 2379637

See you all there – all the best.

Peter Craig  
Committee Member



## ***From the Secretary:***

*It is over a year ago that we celebrated the club's 50<sup>th</sup> anniversary (10<sup>th</sup> & 11<sup>th</sup> April 2021). It was such a memorable weekend. Even after a covid enforced year, we have still managed to get out and have some fun in our loved cars. Thank you to everyone who has given their continued support to the club.*



## ***From the Treasurer:***

***Renewal of Membership*** - With the last newsletter you would have received an invoice for the 2022 -2023 year subs.

Thank you to those who have already paid their subs for this year (1st May 2022 to 30th April 2023). A reminder to those who have not yet paid prompt payment would be appreciated.

If you are not intending to continue being a member of our club, could you please indicate this by emailing the secretary [acccanty@gmail.com](mailto:acccanty@gmail.com). This will enable me to keep our data base updated.

Stay Safe

Jimmi Anderson ,  
Secretary / Treasurer

***\*\*\*\*\* Save the Date \*\*\*\*\****

***Annual General Meeting  
Sunday 19th June***



If you wish to submit any Amendments to the Rules, this must be submitted 21 days in advance of the AGM in writing to the Secretary. The rules of the Club may be altered, added to, or rescinded by a majority vote of financial members present at any Annual General Meeting of the Club.

**Please come along and support your club**

# *Is anyone interested in helping with this event???*



*Please let me know and I will co-ordinate the names for Ronald McDonald House, South Island*

*They will be hosting their annual fundraising event - [Christchurch Supper Club 2022](#)*

*On Friday the 17th of June*

*Over the past 2 years, RMH have had the fantastic support of Car Clubs like the American Classic Car Club, supporting us to be available in driving guests to their event venue for the night. This year we have reduced the number of guests from 350 to 200, given the current settings and environment.*

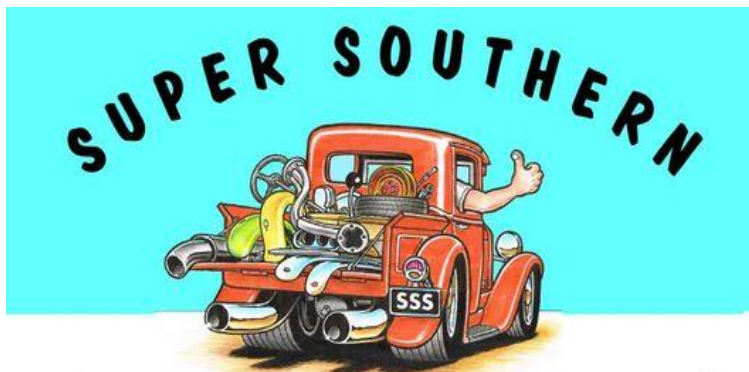
*As in previous years, the event venue has changed and this year will be commencing from the Majestic, 189 Durham Street South, Christchurch CBD, from there we will have guests going to 25 venues down from 40 last year. (This year cars muster a little earlier at 6.30 pm and depart commencing 7 pm)*

*Our guests have over the past 2 years seen the traveling to dinner in the array of awesome cars as a real highlight of the evening and we really hope that we can gain support from enough clubs this year to make this again possible.*

*Many thanks*

*Jimmi*

# Non-Club Events – you may like to attend



## SWAP MEET

**AUTOMOTIVE ONLY**

**SUNDAY MAY 15th 2022**

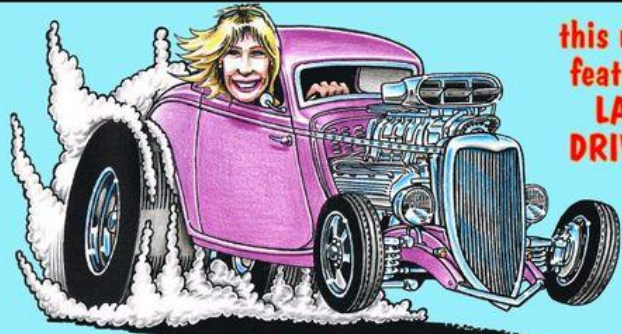
Kustom's Clubrooms - McLeans Island Road

Sites \$15 - Access to grounds from midday Saturday or 6am Sunday

Special parking for Cars For Sale - Entry Fee applies per person

Swap Meet starts at 7am Sunday - \$5 entry (kids free)

**MORE Information & Bookings - 021 254 9471**



this month  
featuring  
**LADY  
DRIVERS**



**SUNDAY  
May 1st 2022  
8am - 11am**

**KUSTOMS CLUBROOMS  
MCLEANS ISLAND ROAD - MCLEANS ISLAND - CHRISTCHURCH**



Aircraft | Motor Vehicles | Motorbikes | & Much More!

Sheffield Volunteer Fire Brigade  
**Fundraiser**

**Wheels & Wings**



**Sunday 1 May 2022**

Rain Off Day 8 May | Gates Open 8.30 am

Signposted Kimberley Road, Darfield  
No Dogs Allowed  
No Alcohol

Hot Food and Drinks  
**AVAILABLE**

Adults \$10  
Family Pass \$25



FOR FURTHER INFORMATION:  
Graeme: 027 604 1824 (Aircraft Inquires)  
New: 021 650 554 (Vehicle Inquires)



**\$10 PP. ENTRY**

otago community hospice **CHARITY CRUISE**

**HANCOCK PARK, ST KILDA, DUNEDIN**

**20th NOVEMBER 2022 FROM 9.30AM**

If your car is road legal and unique, then it's eligible to cruise.  
Call or text Ken on 021 735 913 for more information, or visit the Facebook page at [www.facebook.com/OtagoCommunityHospiceCharityCruise](http://www.facebook.com/OtagoCommunityHospiceCharityCruise)

with thanks to the following sponsors:



● **Ashburton Aviation Museum**

This wonderful collection of aircraft and memorabilia will be open for viewing from 1.00pm until 4.00pm Seafield Road. Entry \$10 adult, children free.

> Contact: Owen Moore 03 308 3442 or 0274 344 797

● **Patersons Funeral Services Wheelchair Basketball**

Stadium Oxford Street at 3.00 pm. Come and see the wheelchair basketball team take on a local celebrity team. Gold coin donation.

> Contact: Pauline Paterson 03 308 7474

**SUNDAY 15TH MAY**

● **Ashburton Wheels Week Tractor Pull**

Two days of Horsepower Hero's sorting the operators from the seat warmers. Open to all tractors, Old, New, Big & Small, Modified & Super Modified. 9.00am start, food and coffee trucks available. Mayfield Domain, Entry via 15 Lismore Mayfield Road. Entry fee for Competitors, \$100 per tractor per day, Entry \$ 10 per person, under 12's free.

> Contact: Robbie 0275 524 624



● **Coffee & Classics Vehicle Show**

Bring along your pride and joy, Vintage, Classic or modern, cars, motorcycles, trucks etc at the Goodyear/Robert Harris car park West Street Ashburton, Opposite Phat Duck. 11.00am - 2.00pm. VCC event



● **Ashburton Family Go Kart Club**

A great day of paddock racing. Location to be confirmed. Weather dependant.

> Contact: Michael Gallagher 0274 430 453

● **Mid Canterbury 4X4 Club**

Play day at the 4WD Park located at the river end of Cochrans Road just off Beach Road, starting at 11.30am. Weather dependant.

> Contact: John McDonald 021 464 639 or Doug Cain 027 843 8416







**Greg Donaldson Contracting Ltd**

Proud Sponsors of the 2022 Wheels Week



G D C Ltd  
A.I.S.  
Allenton Auto Centre  
Ashburton District Council  
Ashburton Toyota  
AutoSparks  
B.I.T.S (NZ) Ltd I Technology Services  
Brian FM  
Ashburton Can-am  
Crisp Apple Web Design  
DPI  
Honda Country Ashburton  
Hyundai Mid & South Canterbury  
Jeff Marshall Motorcycles  
Kawasaki Canterbury Ltd  
McKay & Donaldson E Bikes  
M T F Finance Ashburton  
Netherby Garage  
Neumanns Tyres  
Pearsons Coachlines  
Robbies Undercar Specialists  
Rosco Auto Dismantlers  
Ruralco  
Sims Bakery  
SprayMarks  
Stocker Solutions  
Wilson Windscreens 2018 Ltd  
Wilson's Bulk Transport Ltd  
Wrights Dry Cleaners & Apparelmaster



**GREG DONALDSON CONTRACTING**  
ASHBURTON  
**wheelsweek 2022**



**30th April - 15th May 2022**  
[www.wheelsweek.co.nz](http://www.wheelsweek.co.nz)

[www.facebook.com/wheelsweekplus/](http://www.facebook.com/wheelsweekplus/)

**PROGRAMME**

We have not been able to provide a full programme of events for this year and fully understand and support those that are unable to hold their events. We are pleased to be able to offer a small list of events that do require your support to make them successful.

**SATURDAY 30TH APRIL 2022**

● **Ashburton Speedway Assn**

(2 days of racing) Day 1, Street Stocks, Adult Ministocks, Production Saloons, CTRA - NZ Speedway Wingless Sprint Car Title, CTRA - NZ Youth Ministocks Title, CTRA - South Island TQ Title. Seafield Road adjacent to the Airport. From 12.00 pm. \$15.00 adult, \$25.00 for a two-day pass, Gold Card holders \$10.00/day, under 14 free (must be accompanied by an adult).

> Contact: Graham Ackroyd 0274 555 387

**SUNDAY 1ST MAY**

● **Rotary Club of Ashburton Plains Classic Car Run**

Registration: 9.00am - 10.15am at the Ashburton Show Grounds Depart from Ashburton 10.30am. Note that everybody is welcome to participate with any car, finish at Mt Somers. Cost, \$20 per vehicle



There will be No food or drinks to purchase this year, please take a picnic lunch.

For any further information please contact either:

> Alan Sim - sim.family@xtra.co.nz, 03 308 8835

● **Ashburton Car Club Motorkhana**

\$40.00 per person entry fee to compete; enter on the day. Cars must be roadworthy to warrant of fitness standard. Location, TBC

> Contact: Kim Adams 027 907 4001  
admin@ashburtoncarclub.org.nz

● **Ashburton Speedway Assn**

Day 2 of racing, Stockcars, CTRA - NZ Speedway Wingless Sprint Car Title, CTRA - NZ Speedway Saloons Title, CTRA - NZ Youth Ministock Title, C Grade. Seafield Road adjacent to the Airport. From 12.00 pm. \$15.00 adult, \$25.00 for a two-day pass, Gold Card holders \$10.00/day, under 14 free (must be accompanied by an adult).

> Contact: Graham Ackroyd 0274 555 387

● **Ashburton Motorcycle Club TT**

Location TBC. Competitors to pay entry fee. Vintage MX & Club TT. More details on Facebook page and My Rides.

> Contact: Shane Christie, 027 325 4773

● **Ashburton Aviation Museum**

This wonderful collection will be open for viewing from 1.00pm until 4.00pm Seafield Road. Entry \$10 adult, children free.

> Contact: Owen Moore on 03-308 3442 or 0274 344 797

**MONDAY 2ND MAY**

● **Mid Canterbury Connector Community Transport Service**

The service offers transport into Ashburton Township on demand (make a booking and we will come to you), Monday to Friday between 9am to 4.30pm, for people living in towns around the district/in rural areas, who do not have transport. A small charge applies depending on where around the district we pick you up and take you home.

> Booking required. Phone 03 928 8164

● **Ashburton Toyota**

Display of vehicles on the hardstand cnr East Street & Burnett Street, Monday to Friday.

**SATURDAY 7TH MAY**

● **Ashburton Car Club Street Sprint 2022**

Riverside Industrial Estate 8.30 am. Watch one car at a time as they race against the clock, down to a two-car run off on Sunday. Entrance fee by donation. Entry Robinson Street past Roscos.



> Contact: Malcolm Lovett 0274 301 065 or Daniel Tew 0272 276 637  
admin@ashburtoncarclub.org.nz

● **Originals Motorcycle Show and Shine**

RSA Cox Street Ashburton, 11.30 am - 4.00 pm. Open to all makes and models to be on site by 11.00am. Entry \$10.00 per bike, prizes for top 10 bikes. Gold coin entry, money raised goes to charity.



> Contact: Gerald McKenzie, 021 259 4761

● **The Plains Railway & Historical Museum Complex**

Maranan Road, Tinwald: 11am - 4pm. K88 Train Rides, Vintage Machinery, Museum Village open, Hand Craft Display. Browse through the Ashburton Fire Museum, the Ashburton Woodworkers and Lynn Woodworking Museum - take a miniature Train Ride with the Ashburton Steam & Model Engineers. Find us on Facebook.

**SUNDAY 8TH MAY**

● **Ashburton Car Club Street Sprint 2022**

Second day of racing against the clock. Be there for the top 32, reducing to find the top two qualifying times to find the finalists. Riverside Industrial Estate. Entry fee by donation. Entry Robinson Street past Roscos.

> Contact: Malcolm Lovett 0274 301 065 or Daniel Tew 0272 276 637  
admin@ashburtoncarclub.org.nz

● **Ashburton Aviation Museum**

This wonderful collection of aircraft and memorabilia will be open for viewing from 1.00pm until 4.00pm Seafield Road Entry \$10 adult, children free.

> Contact: Owen Moore on 03-308 3442 or 0274 344 797

**MONDAY 9TH MAY**

● **Mid Canterbury Connector Community Transport Service**

The service offers transport into Ashburton Township on demand (make a booking and we will come to you), Monday to Friday between 9am to 4.30pm, for people living in towns around the district/in rural areas, who do not have transport. A small charge applies depending on where around the district we pick you up and take you home.



> Booking required. Phone 03 928 8164

● **Ashburton Toyota**

Display of vehicles on the hardstand cnr East Street & Burnett Street, Monday to Friday

**WEDNESDAY 11TH MAY**

● **Suzie Morrison & Grant Gordon Memorial Trial; Night Car Trial**

Meet at the MSA. Entries on the night. Will need licensed driver, navigator, pens, torch or spotlight, clipboards, and road legal. Documentation starting 6.30pm, start 7.00 pm \$30.00 per car.

> Contact: Kim Adams - 027 907 4001  
admin@ashburtoncarclub.org.nz

**SATURDAY 14TH MAY**

● **Ashburton Motorcycle Club**

Motorcycle Tour. Meeting at 9.30 am, leaving at 10 am from Robert Harris on West St. The ride will be approximately 200km depending on the weather.

> Contact: Shane Christie, 027 325 4773

● **McKay & Donaldson E-Bike, Family Fun Bike Ride**

Meet at 1.30pm at the south end of the Ashburton Bridge to cycle to Lake Hood. Suitable for families and individuals. Prizes

> Contact: Ross Butterick, 0274 778 068

● **Ashburton Wheels Week Tractor Pull**

Two days of Horsepower Hero's sorting the operators from the seat warmers. Open to all tractors, Old, New, Big & Small, Modified & Super Modified. 9.00am start, food and coffee trucks available. Mayfield Domain, Entry via 15 Lismore Mayfield Road. Entry fee for Competitors, \$100 per tractor per day, Entry \$ 10 per person, under 12's free.



> Contact: Robbie 0275 524 624

